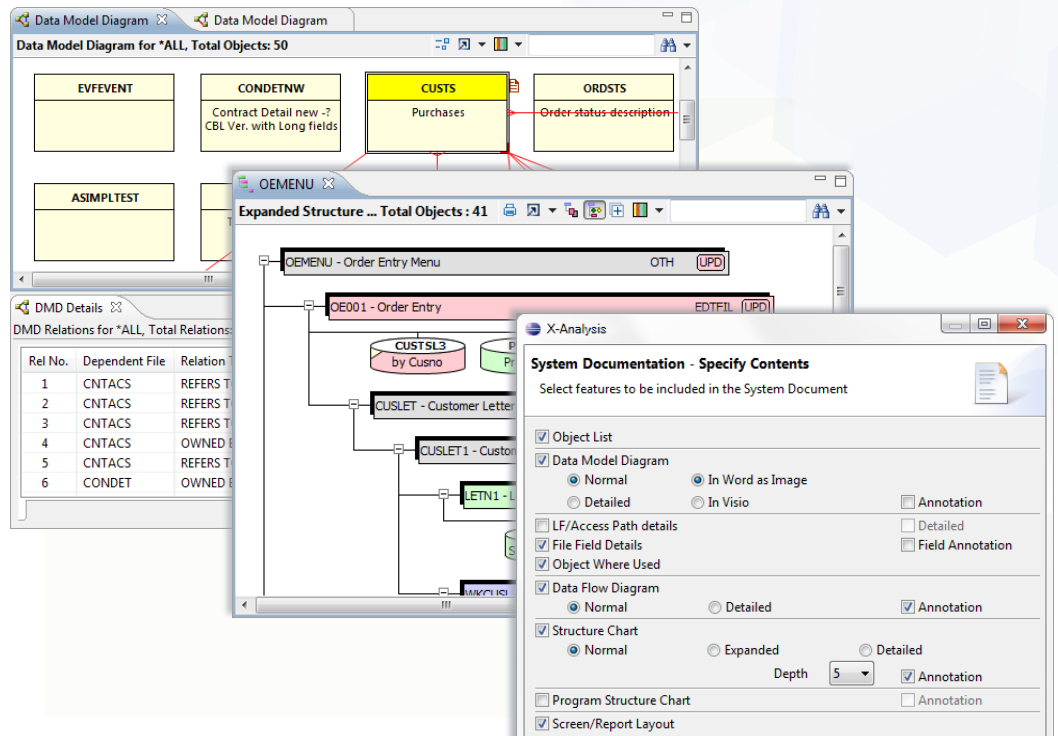




Products

X-Analysis



Key Features

- ▶ **Automated graphical documentation** makes it easy for IT and the business to visualize and understand application design and flow.
- ▶ **Powerful impact analysis** tracks “where used” information starting from a single field or variable through all iterations and associated variables/fields.
- ▶ **Extraction of relational data models from RPG/COBOL/ SYNON** facilitates database modernization/re-engineering.
- ▶ **Extraction of business rules from RPG/COBOL** enables IT to cross-reference, consolidate and store business rules, exposing the business logic that forms the nucleus of the application.
- ▶ **Design, quality and complexity metrics** help IT measure and track program complexities against established benchmarks.
- ▶ **Automated RPG/COBOL/ SYNON conversion** allows IT to transform older assets into modern languages such as RPG Free and Java.
- ▶ **Automated database conversion** to transform DDS to DDL, SQL Server, MySQL, Oracle or UDB.

X-Analysis: Complete IBM i Application Analysis and Management Suite

The Challenge: Unlocking business critical information from your IBM i and modernizing efficiently

IT is in a state of transition within the enterprise. Back office systems and applications, powered by workhorse platforms such as IBM i, remain as critical to business today as ever. To serve emerging demands, businesses must develop their IT operations to embrace strategic initiatives such as Cloud computing, the mobile enterprise, Web services and Web enablement.

When it comes to modernizing applications, exposing business rules is a critical priority. However, for many IBM i enterprises, core applications – as vital as they may be – remain a “black box” to the teams responsible for modernization efforts. Lack of understanding of the application’s business rules, code composition and dependencies slows development and increases risk, inhibiting the business’s ability to reach its strategic goals on time and on budget.

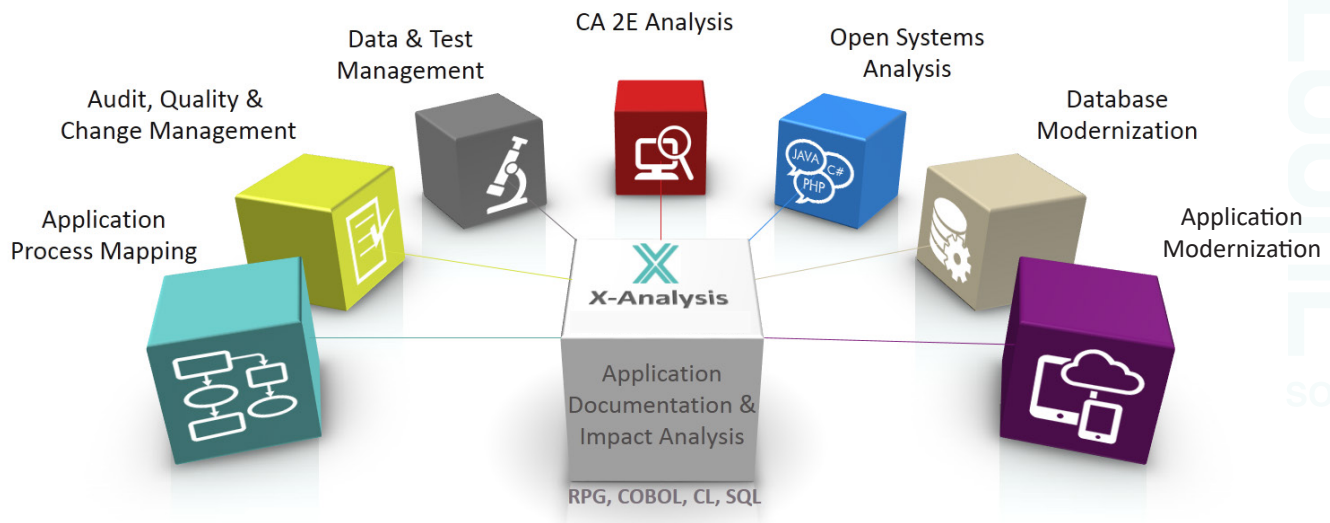
What IBM i organizations need:

The ability to clearly understand and document the entire business application and expose business rules. This allows them to bring together today’s modern development methods with critical value embedded within IBM i and its RPG, CA 2E (Synon) and COBOL applications.

The Solution: X-Analysis for effortless application documentation and analysis

For more than 25 years, thousands of IBM i developers have turned to Fresche Solutions’ **X-Analysis** suite of tools to better understand, maintain, enhance and evolve billions of lines of IBM i code. The suite provides analysts, developers, architects and operations teams with detailed analysis and interactive diagrams that enable an in-depth understanding of RPG, COBOL and CA 2E (Synon) applications and data. This suite of tools is used to document, analyze and describe systems in a simple manner that can then be shared throughout the organization, even with members who are not technical. IT professionals use the suite to extract business rules, audit code quality, perform impact analysis, modernize applications and databases, resize fields, and so much more.

The **X-Analysis** suite: everything you need to better manage your IBM i applications



FRESCH
SOLUTIONS

About Fresche Solutions

Fresche specializes in helping companies achieve their IT and business goals by better managing and evolving their IBM i applications. Companies can count on Fresche for complete application management and modernization solutions, including planning and analysis, application and database modernization, development and deployment, staff augmentation, complete project management and ongoing application services. Companies running RPG, COBOL, CA 2E SYNON and Java applications rely on our comprehensive, automated solutions that optimize IBM i systems and take advantage of Web, SOA, Mobile and Cloud Solutions. For more information, please visit us at www.freschesolutions.com.

X-Analysis suite © Fresche Solutions Inc. All Rights Reserved.

A full suite of tools for analysis, development and modernization

The world's leading solution for documentation and analysis of IBM i, **X-Analysis** helps organizations modernize their IT operations by quickly allowing developers to gain a full understanding of their RPG, CA 2E (Synon) or COBOL application functions and business rules. The suite includes the following key features:

- ▶ **Automated application documentation**, data model extraction and impact analysis for RPG and COBOL.
- ▶ **Application Process Mapping**: Business rule extraction and documentation of application processes and flows.
- ▶ **Audit, Quality and Change Management**: Auditing of core application functionality - including design, quality and complexity - to identify and change problematic areas in the application.
- ▶ **Data and Test Management**: Analysis of data quality; data archiving, data subsetting and data masking. Test data automation and management.
- ▶ **CA 2E (Synon) Analysis**: Everything required to analyze and document CA 2E applications, extract business rules and audit code quality.
- ▶ **Open Systems Analysis**: Cross-referencing and documentation of languages such as Java, C#, PHP.
- ▶ **Database Modernization**: Automated conversion of DDS to DDL, SQL Server, MySQL, Oracle or UDB including creation of constraints, long field names and views.
- ▶ **Application Modernization**: RPG automatically converted to RPG Free and Java; COBOL automatically converted to Java.
- ▶ **CA 2E (Synon) Modernization**: Automated conversion solution that converts CA 2E (Synon) applications to Java by uniquely extracting critical information locked away in the Synon model.
- ▶ **Field Resizing**: Complete automated function for resizing fields in IBM i applications; includes detailed impact analysis to ensure that resizing efforts do not cause unintended problems.