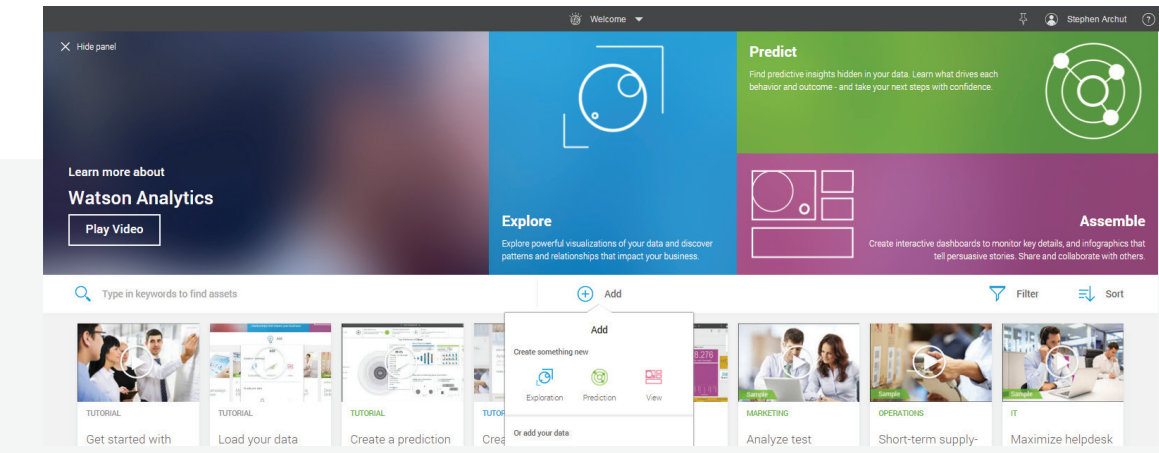




# Watson AI Virtual Education

Everything you need to know to get started with Watson on IBM i



Watson is IBM's suite of enterprise-ready AI services, applications and tooling. Powered by the latest innovations in machine learning, Watson lets you learn more with less data. You can integrate AI into your most important business processes by building models from scratch or leveraging IBM's APIs and pre-trained business solutions. No matter how you use Watson, your data and insights belong to you – and only you.

Fresche's Watson AI Virtual Education makes Watson easily accessible to IBM i professionals through a series of virtual courses. You'll discover how to take advantage of the business benefits of cognitive computing, all while learning at your own pace.

## See How Watson and AI Are Changing Business:



With Watson, KPMG is driving innovation and empowering its employees



Insurance employees are working with Watson to assess claims 25% faster

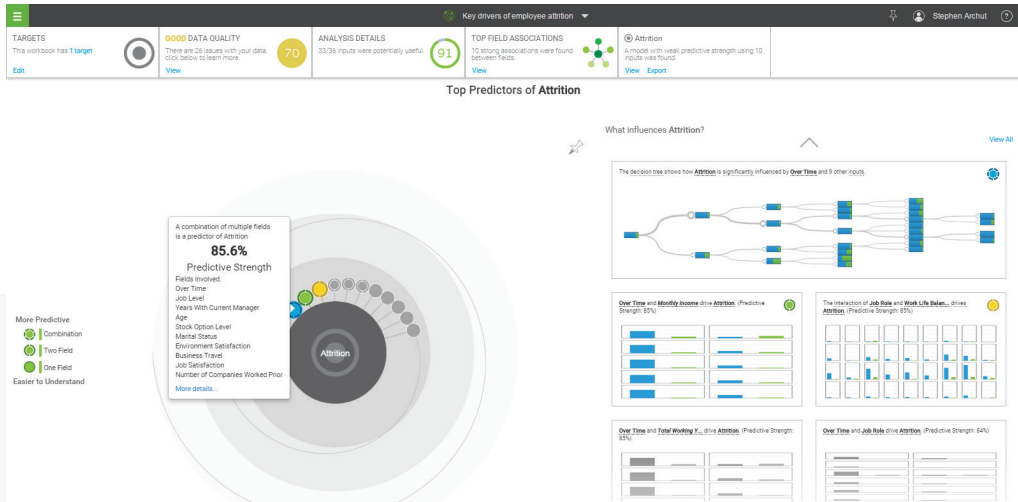


Staples is revolutionizing customer service with their Easy Button

"It's time to harness the power of cognitive computing. In this digital era, organizations are not only competing with other organizations in their market, they're also competing against innovation.

It's imperative that organizations drive business growth by developing solutions that go beyond traditional computing. With massive amounts of data available to us, we're only limited by our imagination."

Read more about Fresche's IBM i Watson training at [freschesolutions.com](http://freschesolutions.com)



This online education will help you get started with Watson so you can learn to pull visual information from real-time data on your IBM i

## Two Courses to Choose from:

<p> <b>Course One: Connecting Your IBM i Applications to Watson</b></p> <ul style="list-style-type: none"> <li>➤ Introduction to Watson and IBM Cloud (Bluemix)</li> <li>➤ Integrating RPG with Watson and Creating REST APIs with Ease</li> <li>➤ Connecting to IBM i and Watson from Open Source</li> </ul>	<p> <b>Course Two: Connecting Your IBM i Data to Watson</b></p> <ul style="list-style-type: none"> <li>➤ Db2 for i and Watson Analytics</li> <li>➤ Db2 for i and the Art of the Possible with Watson Services in IBM Cloud (Bluemix)</li> <li>➤ Prepping and Untangling Data for Watson</li> </ul>
---	--

## About IBM Watson

IBM Watson is an AI platform that optimizes tasks and provides new ways of doing business:

- Improve operations by anticipating and preempting disruptions
- Accelerate research and discovery, so you act on data rather than searching for it
- Enrich interactions by reducing response times and increasing productivity
- Make recommendations with confidence by taking into account all possible factors
- Scale expertise by combining employee expertise with your industry's latest learning
- Mitigate risk by staying abreast of new regulations and privacy standards

**For more information, call 1 800-361-6782 or visit [training.freschesolutions.com](http://training.freschesolutions.com)**

### About Fresche Solutions®

Fresche Solutions is an international vendor of IBM i application modernization and management solutions. With offices in the US, Canada, Europe, Australia and India, Fresche helps IBM i customers attain their business goals by better managing, enhancing and evolving their RPG, COBOL and CA 2E (Synon) application environments.

TMs mentioned are those of Fresche Solutions Inc. or their respective owners.

© MMXIX Fresche Solutions Inc.