

TGCentral At-a-Glance

Manage and audit security on all your IBM i systems from one centralized web console with TGCentral.

Capturing the robust security auditing, reporting capabilities and enhanced security control features of TGAudit and TGSecure, TGCentral rises security up to the enterprise level. Administrative tasks are simplified with multi-server management and an easy-to-use web interface.

ADVANTAGES:

- Minimize security breaches
- Save security administration time
- Multi-server management
- Out-of-the-box Security Report Cards for SOX, HIPAA, PCI, + more
- Centralized network security configuration
- RBAC
- Save time researching regulations and compiling audit reports

Centrally Manage IBM i Security

PROBLEM:

You have many IBM i servers, multiple OS levels, and numerous users. **The complexity of your system can create a security management nightmare** while collecting and organizing massive amounts of data can be **time-consuming and costly**.

SOLUTION:

TGCentral helps you monitor security in complex environments, and gives you the ability to **configure privilege escalation and network security on all your servers from a single console**.

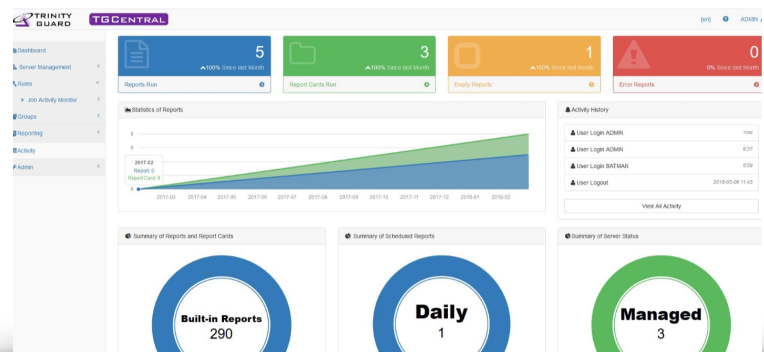
Simplify Regulatory Compliance

PROBLEM:

Do you struggle complying with GDPR, PCI, SOX, or other regulations? Many organizations are still working on becoming compliant with the EU's most recent and very stringent data protection and privacy mandate, on top of keeping up with auditing requirements for many industry-standard regulations.

SOLUTION:

Let TGCentral help you achieve compliance quickly! From a centralized console, TGCentral has the tools you need to **report on data changes within sensitive files, keep tabs on the security of IFS files & QSYS objects, as well as see the network traffic accessing your IBM i servers**. You can also customize report cards to see high-level views of your unique environment's compliance status.



High-Level Security

TGCentral provides centralized management for viewing and configuring the security of your entire IBM i network. You no longer have to go from server to server configuring individual security settings or gathering security auditing data for individual systems. TGCentral gives you the tools you need to manage your security and compliance efficiently.

Key Features

- Dashboard view showing the status of all IBM i servers
- Centralized management of IBM i security auditing and report customization
- Centralized management for security configuration of network access and privilege escalation
- Predefined report cards map IBM i security auditing data to major compliance regulations such as PCI, HIPAA, and SOX
- Delta reporting feature that helps you compare report results
- Role-based access control layer that allows you to assign granular user permissions
- Security content covering QAUDJRN, Profiles, Exit Points, and Data Auditing
- Report cards with pass/fail status and drill-down capability
- Over 360 built-in reports covering all aspects of compliance defined by industry experts
- Report wizard that helps you create custom reports or report cards in minutes
- Exception management for report cards
- Online help for all reports

Benefits

- Quickly assess security compliance for your whole IBM i network
- Simplify multi-server security administration
- Configure network access controls through one console for exit points and the socket layer
- Efficiently implement least privilege model security to eliminate excess user authorities
- Save time uncovering security vulnerabilities by using high-level views
- Save hundreds of hours creating reports and researching security requirements
- Gain confidence in the level of security enforced on a system
- Quickly identify field-level changes to sensitive files without having to decipher journal data
- Built-in knowledge and tools to assist in achieving compliance for regulations like:
 - GDPR, PCI DSS, HIPAA, SOX, GLBA, FISMA, Standards Australia, ISO 27001

TRINITY GUARD

Delta Report : All User Profiles For User: *ALL

TGDEV4 From: 2018-04-09 12:25 To: 2018-04-09 12:44

Color references: Record Active Record Deleted Old Field Value New Field Value

	User Profile Name	User class	Display sign-on information	Password change date: YYMMDD	Password change time	Password expiration interval	Password set expired command
2018-04-09 12:44	JSMITH	*SYSOPR	*SYSVAL	180409	120509	0	**YES
2018-04-09 12:25	JSMITH	*USER	*SYSVAL			0	**YES

User Profile Name	User class
JSMITH	*SYSOPR
JSMITH	*USER

← Old

← New

TG Security Suite is a trusted security solution for customers worldwide.

We are happy to talk and give you a free IBM i security implementation plan. Drop by our website or give us a call. We'd love to hear from you!

info@freschesolutions.com ■ www.freschesolutions.com
 +1 (713) 244-6200 ■ +1 (877) 771-6780
 11511 Katy Freeway, Suite #511, Houston, TX 77079 USA